



## Mega Series Deluxe

C1D1 extractions AEL Mega series is designed for medium to high output environments.

### Sizes start at:

10'Wx10'Lx12'H

10'Wx20'Lx12'H

10'Wx30'Lx12'H

or custom sized

## C1D1 LAB MANUFACTURER

Class I, Div. 1 and Class 1, Div. 2 Compliance and Safety for Extraction  
The AEL Modular Extraction Booth was designed to create a safe CID1 working environment for extracting plant oils using flammable or hazardous solvents. The AEL Extraction Hood was designed to create a more affordable CID2 working environment for ethanol extraction, post-extraction processing, and off-gassing.

- All Fire Codes
- Fire Suppression installed
- ETL listed and UL listed Components
- Class 1 Division 1 area meets all NEC, OSHA, NFPA & MED
- Hazardous location hardware and LEL gas detector will insure operator safety



## Economy Mega Series

AEL Mega Economy Series combines safety and functionality to create the perfect extraction environment. This lab comes with all gas detection and standard safety feature.

This unit is perfect for those who are really price conscious.

### Sizes Start at:

10'Wx10'Lx10'H

10'Wx20'Lx10'H

10'Wx30'Lx10'H

or custom sized

## M6 Micro Series (Hood Style)

C1D1, C1D2 AREAS OR POST PROCESS



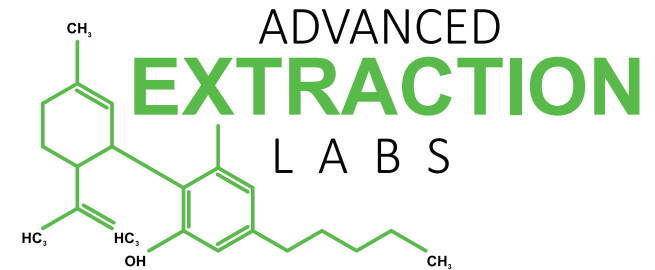
### Available Sizes:

10'Wx9'Hx3'D

10'Wx9'Hx6'D

10'Wx9'Hx8'D

Our Micro series was developed for small to medium extraction jobs and has a smaller overall footprint. Small extraction room with big output.



Shown Above  
(Mega Economy Series)

# Your Safety is our #1 priority.

Manufacturers of C1D1 Modular Labs, we make any SIZE!

**5468 Skylane Blvd A  
Santa Rosa, CA 95403**

**888-406-9733**

[www.advancedextractionlabs.com](http://www.advancedextractionlabs.com)



## EXXA Series

AEL Exxa Series is the perfect choice for labs looking to have a high output. This unit is made with accessibility in mind, our large front doors are ideal for moving equipment in and out of the booth. This lab is compatible with all extraction types and can be retrofit to support almost any equipment.

**Sizes Available:**  
 20'Wx20'Lx12'H  
 20'Wx30'Lx12'H  
 20'Wx40'Lx12'H  
 20'Wx60'Lx12'H

## Control Panel (Included)



## What's inside?



Audible  
& Visual Alarm



Optional  
Fire Suppression



Self Luminating Exit



C1D1 or C1D2  
Lighting



High Velocity fan with  
non sparking blades



Variable Speed Drives:  
Automatically increases  
the fan speed to purge rising  
LEL Gases or Solvents



LEL Gas  
Detector:  
Butane, CO2,  
Ethanol



## Zetta Series:



ZETA: Large size, made to handle large extraction systems or large lab build outs. Supports high volume extraction for Ethanol, CO2, hydrocarbon and more, Our units come complete with engineering.

- Installation
  - Facility design
  - Engineering included
  - Consulting
  - Permit Packets
  - Turnkey Solutions
- Sizes Available**  
 16'Hx 15'Wx30'L  
 16'Hx16'Wx60'L  
 16'Hx16'Wx80'L  
 30'W x 30'L x 16'H  
 Larger sizes available

Ask about or wholesale and distributor programs!

**5468 Skylane Blvd A  
 Santa Rosa, CA 95403**

[www.advancedextractionlabs.com](http://www.advancedextractionlabs.com)